

WELLESLEY COLLEGE

SLATER INTERNATIONAL CENTER

Spring 2015 Newsletter



Dear Students,

Welcome back to campus! Although the snow drifts are high and cold, your presence brings warmth back to Slater and the entire campus. I hope that you had a valuable and recuperative winter break, and I look forward to hearing about all of your amazing experiences.

As you know, we were under construction last semester. Construction was completed in late December, and now we are able to enjoy the new and improved Slater! We have lots of exciting and important events planned for this semester. I hope to see all of you taking advantage of the guidance and resources that we offer.

This newsletter highlights some of the critical issues to think about as an international student, including immigration, taxes, employment, travel, and access to campus resources as well as our events.

Be sure to check our website at www.wellesley.edu/international for more details. In addition, please like our Facebook page and join our LinkedIn group to stay connected with the latest Slater information, news, and events.

I look forward to seeing you often at Slater!

Cheers,

Karen

You can speak with your International Student & Scholar Advisor during Walk-In Hours

Mondays 1:00 pm - 3:00 pm

Wednesdays 2:30 pm - 4:30pm

Thursdays 12:00 pm - 2:00 pm

If Walk-In Hours are not convenient for you, appointments can be made by calling 781-283-2082 or by emailing ychen6@wellesley.edu (no same day appointments.)

Immigration Reminders

Declaring a Major/Updating your Form I-20

If you have recently declared or changed your major, you must request a new Form I-20 to reflect your new major. The Department of Homeland Security requires that your immigration documents reflect the most accurate and up to date information about your program of study. Please see your International Student Advisor if your Form I-20 does not reflect your most current information.

Employment in the U.S. Workshop — CPT and OPT

If you are thinking about doing an internship over the summer or if you are graduating in May, you should start learning about your employment authorization options. As an international student you will need authorization to work off campus (CPT or OPT). Attend our Working In The U.S. workshop, Immigration Attorney Visit, or OPT workshops (see upcoming programs and events), and refer to the employment section on our website for more information: <http://www.wellesley.edu/international>.

ATTENTION SENIORS: *If you are thinking about remaining in the U.S. after graduation and working, it is highly recommended that you attend these workshops.*

Travel

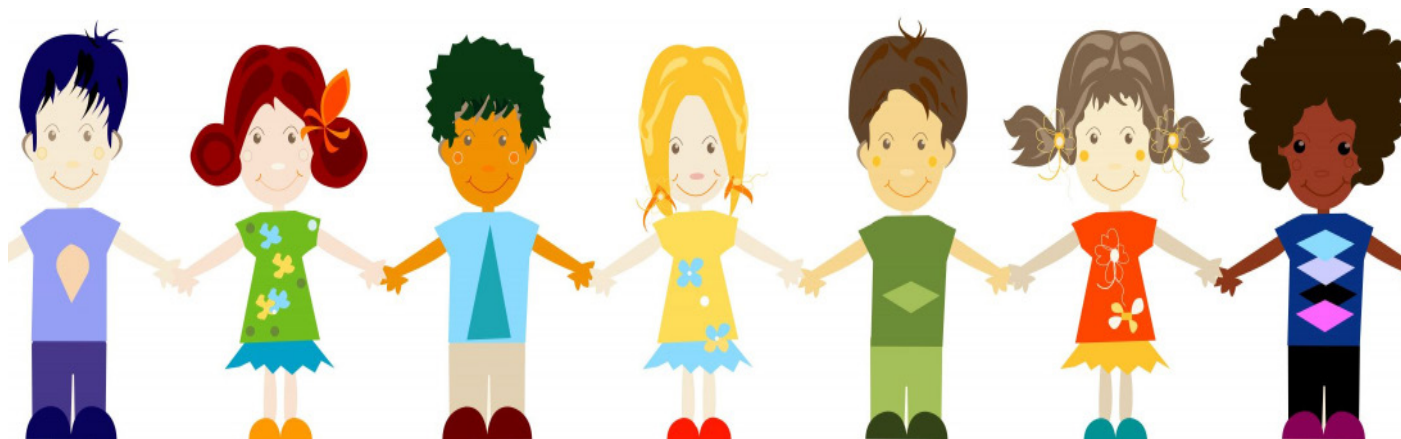
If you are traveling outside the U.S. and plan to re-enter in F-1 or J-1 status, you must have your Form I-20 or Form DS-2019 signed for travel. For F-1 students, the travel signature is valid for one year and is located on page 3 of your Form I-20. For J-1 students, the travel signature is valid for the duration of your Form and is located in the lower left corner of your Form DS-2019. Remember to carry the following documents when you travel:

1. Valid Form I-20 or Form DS-2019 – with travel signature (no older than 12 months for currently enrolled students)
2. Valid Passport (at least 6 months into future)
3. Valid F-1 or J-1 visa
4. Proof of financial support (Certificate of Finances - COF, bank statements, Financial Aid Award Letter)
5. Current transcript or enrollment letter (optional)

If you need a travel signature, you must bring all your immigration documents, including a print-out of your Form I-94, to Slater International Center during Walk-In Hours. If Walk-In Hours are not convenient for you, you may contact Ying Chen to make an appointment at your convenience: ychen6@wellesley.edu or (781-283-2082).

Form I-94

Upon arrival to the U.S. an electronic Arrival/Departure document/Form I-94 is created for you. Please print out a copy of your Form I-94 from the Department of Homeland Security website at www.cbp.gov/I94 after each entry to the U.S. If you have problems retrieving your Form I-94, please contact our office for assistance.



WELLESLEY COLLEGE

Taxes

Tax Season is coming! You may start receiving various tax documents in the mail. Please gather them together to bring with you when you attend one of our tax sessions. Taxes are complicated, especially for international students and scholars, but Slater International Center will provide support as you try to navigate the U.S. tax system. Remember that the deadline to file your taxes is **April 15th!** It is your responsibility to understand and comply with U.S. tax regulations in a timely manner. Keep your eyes open for more details on the availability of our tax preparation software, FNTR, and mark your calendars for these important upcoming tax programs:

1. Tax Information Session

Thursday, February 26th, 6:00pm - 8:00pm, Collins Cinema

2. Tax Prep Workshop 1 & 2 (Repeat Workshops)

Wednesday, March 4th, 5:00pm - 7:00pm, Library Lecture Room

Thursday, April 2nd, 5:00pm - 7:00pm, Library Lecture Room

Upcoming Events and Programs

Optional Practical Training (OPT) Application Assembly Workshops

Slater International Center

If you are interested in working in the U.S. after graduation and would like to apply for Optional Practical Training (OPT), now is the time to discuss the process and prepare your application. Between now and April, we have scheduled various one-hour OPT Application Assembly Workshops at Slater. You can sign up for a workshop at <http://doodle.com/inati9red7myueqx>. Once you have signed up, you will receive an email with forms and instructions on how to prepare for a workshop.

Global Tea Series

Every Friday, 3:00pm-4:30pm

Slater International Center

Join us at Slater for our weekly informal gatherings focused on intercultural exchange, learning, and support. Each week we will chat about different topics and hear from special guests. Tea and cookies always served! We would love to see you at our Global Teas. If you would like to sponsor a Global Tea next semester, please contact Shruti Sitaram: ssitaram@wellesley.edu

February

2/6	Economics Department-Professor Joyce
2/13	Agora
2/20	TBA
2/27	English Language Resource Center

March

3/6	Women's Day
3/13	TBA

April

4/3	International Relations Council
4/10	Foundation of WHO
4/24	Political Science Department - Professor Paarlberg

May

5/1	End of Vietnam War
-----	--------------------

WELLESLEY COLLEGE

Upcoming Events and Programs (Cont'd)

February

Tax Information Session

Thursday, 2/26, 6:00pm-8:00pm

Collins Cinema

This session will provide an overview of the U.S. tax system, review your tax responsibilities as an international student, introduce the WindStar FNTR Tax Prep software, and provide you with some helpful information and handouts.

March

Tax Prep Workshop #1

Wednesday, 3/4, 5:00pm-7:00pm

Library Lecture Room

The first of two informal and interactive workshops to help you navigate the Windstar FNTR software. Bring your laptop to begin working on your taxes!

Working in the U.S: Summer Internships

Wednesday, 3/11, 12:30pm-2:00pm

LWC 413

Come learn about working in the U.S., the difference between CPT and OPT, and everything you need to know about summer internships!

April

Tax Prep Workshop #2

Thursday, 4/2, 5:00pm-7:00pm

Library Lecture Room

The last informal and interactive workshops to help you navigate the Windstar FNTR software.

Immigration Attorney Visit #2

Thursday, 4/9, 5:30pm-7:00pm

Library Lecture Room

Are you an international student interested in working in the US after you graduate and complete your OPT? Come hear an overview of common visa options from an immigration lawyer!

Spring Festival

Thursday, 4/18, time TBC

Tishman Commons

Spring Festival is a celebration of traditions from around the world to mark the beginning of spring, featuring food, performances, and fun activities for all!

May

End of Semester Gathering

Friday, 5/8, 5:00pm-7:00pm

Slater International Center

Join the Slater E-Board and Slater International Center Staff in celebrating the end of the semester and hear updates on what's happening at Slater! Food will be served.

Travel Signature Day

Monday, 5/11, 9:00am-4:00pm

Slater International Center

If you are traveling outside the U.S. and plan to re-enter in F-1 or J-1 status, come to Slater to have your Form I-20 or Form DS-2019 signed for travel.

Slater International Senior Reception

Thursday, 5/28, 6:00pm-8:00pm

Slater International Center

Seniors, come to Slater to celebrate your time at Wellesley!

Other Reminders

Host Family – Reconnect with your hostesses this semester to learn more about North American culture and to share your culture too! They would love to hear from you.

Spending Time at Slater – Don't forget you can always spend time at Slater! Your Wellesley ID gives you swipe access and allows you to come, relax, eat snacks, meet with your friends, or watch movies anytime! Just remember to follow the clean-up guidelines posted and return all DVDs after use. Please be respectful of the Slater space.

Slater International Student Organization – The Slater E-Board meets weekly at Slater to discuss international issues and concerns as well as to plan events that support international students and increase intercultural understanding. All E-Board meetings are open, and monthly meetings are scheduled for the entire community. Please contact Mashiwat Mahbub at smahbub2@wellesley.edu or Sessen Mengist at smengist@wellesley.edu for further information.

Resources

Going Global – Check out “GOING GLOBAL” – A Wellesley College resource that links students to a comprehensive database of international employment opportunities and country-specific information on industries and networks. You can access Going Global through the Information Resources tab in MyCWS or on-campus at: <http://online.goinglobal.com/>. It is recommended that you set up your own account, to save searches and information.

Dining and Transportation Services change during academic breaks. For more information, please contact Dining Services, Residential Life, or the Housing & Transportation office.

For Dining Hours: <http://www.wellesley.edu/reslife/dining>

For Housing: <http://www.wellesley.edu/reslife>

For Transportation: <http://www.wellesley.edu/Transportation/>

Website

Our website (www.wellesley.edu/international) gives you access to important forms and resources. There is information on everything from immigration to employment as well as resources relevant to living in the U.S. All important forms and handouts are available on our website, under the “Forms and Resources” tab. Save yourself a trip to Slater!

Social Media

To stay up to date on all of the latest Slater events, we encourage you to follow us on:

Facebook: <http://facebook.com/SlaterInternationalCenter>

Twitter: <http://twitter.com/SlaterCenter>

And join our *LinkedIn* group to connect with Slater students and alumnae.

