



BANKING AND OTHER OUTSIDE SERVICES FOR WELLESLEY COLLEGE STUDENTS

Many Wellesley students choose to open accounts with national and local banks that do business close to campus. There are numerous banks with branches in and around Wellesley. Including:

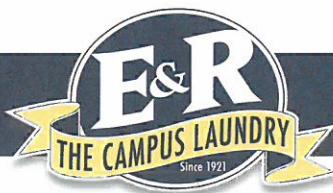
Bank of America	http://www.bankofamerica.com/studentbanking
Citibank	http://www.citi.com/campus/
People's United Bank	https://www.peoples.com/peoples/Main/Personal/Checking/Checking-Packages/e.Plus-Checking
Sovereign Bank	http://www.sovereignbank.com/personal/promotions/student-Q1-2012.asp?vurl=25

Bank of America has a full-service ATM in the Lulu Chow Wang Campus Center. The other banks listed above are within walking distance of campus. Please check their individual websites for further information. Representatives of the above banks will be in the Wang Center on August 27 to provide information regarding the services that are available and to open new accounts. Please note that opening a local personal checking account may take a week or more and local businesses may prefer in-state checks.

Students planning to secure on-campus employment should note that all Wellesley College student employees are required to have direct deposit to receive their paychecks. Direct deposits may be made to any bank of your choice in the United States.

Laundry and dry cleaning services are available to students. Their brochure is included in this packet. Representatives from **E & R Cleaners** will be in the Wang Center on August 27. You can reach them at www.EandRCleaners.com or call 800-243-7789 or 603-627-7661 for additional information.

Purchasing bed linens and towels for the residence hall can be done through **Resident Hall Linens**. You may get additional information online at www.rhl.org/wls or call them at 1-609-359-1074.



Dear Wellesley College Students and Parents:

In the 2013 - 2014 academic year, Wellesley College and E&R – The Campus Laundry will once again partner to provide laundry services to all interested students. Having been of service to colleges, universities, and boarding preparatory schools since the 1960s, we have come to understand certain realities about student life; in particular that laundering clothes can become a low priority for many students given their increasingly busy schedules.

To help address this issue, we have offered two especially efficient and practical programs for years – Look Sharp and Just the Basics. **These plans are designed to allow students to make the most of their limited free time and you can rest assured that the service will be top-notch. Our plans are currently available at discounted rates.** Additional details are provided in the attached brochure.

Sustainability Leaders: Our Look Sharp and Just the Basics plans not only maximize your student's available free time and promote a clean and healthy dorm room, they also help to reduce the school's carbon footprint.

Although the campus washers and dryers are relatively efficient, they cannot compare with the equipment at our central laundering facility in terms of gas, electricity, and water usage.

At E&R, we make it easy to register your student via our online order form. You may also phone, fax, or mail your registration information back to us. Please see the enclosed registration form and promotional materials for details on how to order. Registration for any E&R service should be completed no later than August 15th, 2013 to receive our discounted rates.

Over the years, we have continued to maintain our reputation for providing reliable, professional and top quality service to students. I hope that you will consider subscribing to one of our service plans.

Sincerely,

Rick Botnick
President / Chief Quality Officer
E&R Laundry and Dry Cleaners

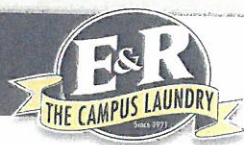
P.S. If you have questions, please contact our Customer Service team at 1-800-243-7789. Please retain this brochure for your record of E&R's policies and procedures.

The chart below compares the benefits of each of the laundry service options:

Features	Look Sharp	Just the Basics
Wash/dry/fold laundry; neatly folded and right-side-out (except socks); all bras and underwear (including delicates) are w/d/f.	✓	✓
Includes cleaning of rental AND/OR personal bed and bath linens (sheets, pillowcases, towels, face cloths).	✓	✓
Launderable, button-down dress shirts and blouses are pressed and returned on hangers.	✓	*
Gentle care washing, drying and pressing; does not include, and we cannot process, "hand wash", "lay flat to dry", or "line dry".	✓	*
Skirts, dress pants including khakis, and dress shorts returned pressed and on hangers.	✓	*
Polo/Sport shirts returned pressed and on hangers.	✓	*
Sweaters returned pressed and on hangers - ALL sweaters are dry cleaned.	✓	*
Professional dry cleaning and pressing.	✓	*
Comforter and Blanket Cleaning Plan FREE: A \$75 Value.	✓	*

* Service available for an additional fee; see the enclosed registration form and promotional materials for details.

Please see the enclosed promotional information for additional details of E&R's plans.



Wellesley College



INCREASE YOUR **ACADEMIC ADVANTAGE** Free Up Time with One of Our Great Plans!

*"I had E&R in the 70s
and now my son is
using them."*

– Facebook Dad quote



*"Peace of mind for a
freshman and her
parents! Thank you."*

– Facebook Mom quote



A Healthy Lifestyle for Your Student

- Students, and therefore their clothing, can be exposed to potentially infectious bacteria throughout their daily activities.
- E&R has the exclusive distribution rights for BlockTeria™, a fabric sanitizer that is added to each load we wash.
- BlockTeria™ eliminates 99.999% of infectious contamination including MRSA-Staph.

Gentle Care Processing vs. Dry Cleaning

- Over 70% of items that we return to students on hangers are laundered and dried with a gentle care process, then pressed.
- We launder all items that will get the same or better cleaning by using a gentle care laundry process vs. dry cleaning.

Leaders in Sustainability

Students who use E&R generate the following utility savings with every load of laundry we do (savings based on independent study performed by TDK Engineering):

86% Water Savings

64% Gas Savings

80% Electricity Savings



World-class, environ-
mentally sound student laundry and

Should you require to cancel these services for the FULL ACADEMIC YEAR, you will receive a pro-rated refund, minus a \$69 operations fee. Notices received after that date, but before Jan. 2, 2014 will receive refunds for the second semester only.

Our "LOOK SHARP" Plan: \$950* You'll love it!



- Wash/dry/fold laundry; neatly folded and right-side-out.
- Includes personal bed and bath linens (sheets, pillowcases, towels, face cloths, etc.) in addition to your clothing.
- Launderable, button-down dress shirts and blouses are pressed and returned on hangers.
- **Gentle care** washing, drying and pressing
- Skirts and dress pants, including khakis, returned **pressed and on hangers**
- Polo/Sport shirts returned **pressed and on hangers**
- Sweaters returned **pressed and on hangers**
- Professional **dry cleaning and pressing**
- Plus get our **Comforter and Blanket Plan FREE: A \$75 Value**

**OUR MOST
POPULAR PLAN!**
Less than \$10
more per week!

*In addition to wash/dry/fold service, dry cleaning, gentle care processing and pressing are provided at **NO ADDITIONAL CHARGE.****

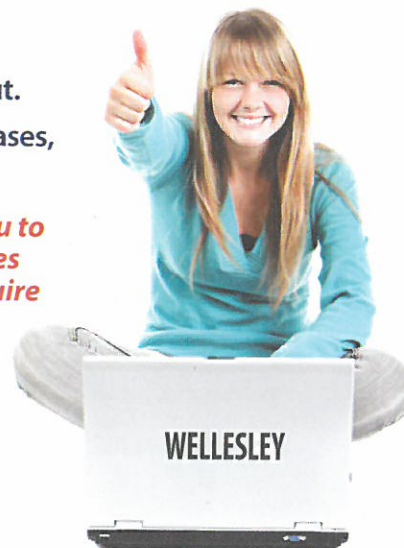
Our "JUST THE BASICS" Plan: \$630* For the more casual student



- Wash/dry/fold laundry; neatly folded and right-side-out.
- Includes personal bed and bath linens (sheets, pillowcases, towels, face cloths) in addition to your clothing.

*To avoid additional charges, we strongly encourage you to consider our "Look Sharp" Plan.** Below are some prices of commonly sent items with care labels that often require gentle care or dry cleaning:*

• Sweater	\$6.95	• Skirt	\$6.75
• Pants	\$6.75	• Blazer	\$6.75
• Dress	\$12.30	• Tie	\$4.95

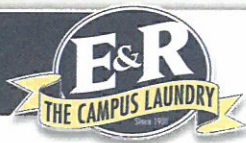


* Plans are designed for individual use only. Sharing of plans between students constitutes immediate forfeiture of service with no refund provided.

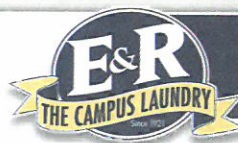
** Our policy is to return it to you clean, whenever we can, regardless of which plan you have purchased. With our "Just the Basics" Plan, a credit card is required to be on file for payment of additional monthly charges. Garment care labels often call for gentle care and/or dry cleaning. As a professional cleaner, we have an obligation to follow a garment's care label. For example: We dry clean all sweaters; All fleece requires gentle care washing; Certain styles of Under Armour® type performance gear require gentle care. These items incur additional charges under our "Just the Basics" Plan.

Environmentally-aware
dry cleaning service.

cancellation charge, provided that you submit a written cancellation request that is received no later than Oct. 15th, 2013. Cancellation charge, minus the \$69 operations cancellation charge. There will be no refunds issued after Jan. 2, 2014.



Wellesley College



Register online at www.TheCampusLaundry.com using password **DB79**



(*740)

"Look Sharp"
\$950

**OUR MOST
POPULAR
PLAN!**
Less than \$10
more per
week!

(Order now and save! Price increases to \$985 after 8/15/13.)
All pricing is for the full academic year.

*In addition to wash/dry/fold service, dry
cleaning, gentle care processing and pressing
are provided at **NO ADDITIONAL CHARGE.***

ADDITIONAL PLANS



(*746)

"Fresh" Comforter & Blanket Cleaning - FREE

We'll clean your own comforter and/or blankets up to five
times during the school year. (**FREE** with "Look Sharp" plan)



(*745)

"Fresh" Bed & Bath Linen Rental Plan - \$150

Four (4) Flat sheets, two (2) pillow cases, and six (6) large
(24" x 48") top quality bath towels to use and send for
cleaning as needed.



(*744)

"Fresh" Towel Rental Plan - \$80

Four (4) large (24" x 48") top quality bath towels to use and
send for cleaning as needed.



(*741)

"Just The Basics"
\$630

(Order now and save! Price increases to \$665 after 8/15/13.)
All pricing is for the full academic year.

Payment Method: ☐ MASTERCARD ☐ VISA ☐ DISCOVER

CARD #

EXP. DATE

CCV# *

NAME OF CARDHOLDER (PLEASE PRINT)

SIGNATURE

ADDITIONAL PLANS



(*746)

"Fresh" Comforter & Blanket Cleaning - \$75



(*745)

"Fresh" Bed & Bath Linen Rental Plan - \$150



(*744)

"Fresh" Towel Rental Plan - \$80

**A credit card is required to be on file and will be billed
for any gentle care, dry cleaning and/or missing rental linens.**

PLEASE PRINT

Year of Graduation? _____

Gender? ☐ Male ☐ Female (Check one)

STUDENT NAME (AS REGISTERED AT SCHOOL) FIRST/LAST

STUDENT EMAIL

STUDENT CELL PHONE

STUDENT CELL PHONE CARRIER (AT&T, SPRINT, ETC.)

PARENT PHONE

PARENT OR GUARDIAN (PLEASE PRINT) FIRST/LAST

PARENT EMAIL

BILLING ADDRESS (STREET)

CITY

STATE

ZIP

COUNTRY

DID THIS STUDENT USE AN E&R SERVICE AT WELLESLEY COLLEGE IN THE 2012-2013 ACADEMIC YEAR? ☐ YES ☐ NO (Check one)

Payment Method: ☐ MASTERCARD ☐ VISA ☐ DISCOVER -or- ☐ Check (Make checks payable to E&R Cleaners) -or- ☐ Cash

NAME OF CARDHOLDER (PLEASE PRINT)

SIGNATURE

CARD#

EXP. DATE

CCV# **

**If purchasing our "Just the Basics" Plan and paying by check or cash, a credit card is required to be on file for the billing of incidental charges. Please
provide your credit card information in one of the two places provided above.**

FOR OFFICE USE ONLY Bag# DB _____

Check # / \$ _____

Date _____

** Last three digits of the number in
the signature section of your card

Register online at www.TheCampusLaundry.com using password **DB79**

Phone Orders: 800-243-7789 inside the U.S.

603-627-7661 outside the U.S.

Fax Orders: 603-627-7644

Mail Registration Form to: E&R Laundry and Dry Cleaners

School Department

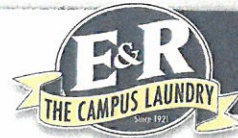
80 Ross Avenue

Manchester, NH 03103-9962

**REGISTER BY
AUGUST 15TH
AND SAVE!**



Wellesley College



SCHOOL SPECIFICS

Things To Know About Our Plans

Getting Started

E&R - The Campus Laundry will staff a table on campus during student registration so that you may pick up your personalized laundry bag, any rental linens, and instructions for getting started with our service.

If you miss us, we will deliver your bag to the bell desk of your dorm prior to the first pick up.

Weekly Service

You may send one bag of laundry to be cleaned each week. You must send laundry in your E&R bag only, which is personalized with your name and customer number. This allows us to track the bag from pickup to delivery.

Pickup & Delivery

At Wellesley College we pick up dirty laundry every Tuesday morning and deliver it back clean on Friday every full week that school is in session throughout the academic year. Dirty laundry must be left at the bell desk of your dorm no later than 8:00 am on Tuesday; clean clothes are delivered back by noon on Friday. All of your gentle care and dry cleaned items are returned on hangers; don't forget to pick up your hangered items when you pick up your laundry bag.

Cleaning of Clothing

All processing is done in our state-of-the-art facility by personnel who have decades of experience in all areas of our operation. Because we control 100% of the work, you can count on us to be 100% responsible for making sure that everything is done right. We carefully inspect all of your clothing when we check it in so there is no need to pre-sort your dirty clothing and linens. We videotape all of your clothing when we unpack it to wash, and again as we fold it and put it back in your bag for delivery.

Please note: All bras and underwear, including delicates, are processed through our wash/dry/fold process. (Please do not send undergarments that cannot withstand a commercial laundry process.) We do not "hand wash", "lay flat to dry" or "line dry"; all sweaters are dry cleaned and all fleece items are put through our gentle care department.

We carefully read all care labels and inspect all clothing to determine what can go through our wash/dry/fold process vs. what needs gentle care or dry cleaning. Please note that with our "Just the Basics" plan, any items that we determine to need gentle care or dry cleaning will incur additional charges and we require a credit card to be on file for the billing of monthly charges. If you sign up for our "Look Sharp" plan, all dry cleaning and gentle care is done at no additional charge.



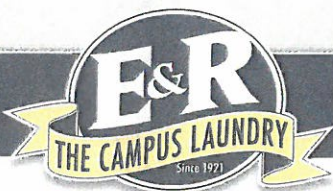
To Order

If you have questions prior to ordering our service, or need help with the ordering process, please call 800-243-7789 and Press 1 to reach our School Services Team.

To Reach Customer Service

Once you place your order, our Customer Service Department is available throughout the school year to answer any questions that you or your student may have. Customer Service can be reached at info@EandRCleaners.com or via telephone at 800-243-7789, Ext 713 and Ext 714.





Easy to Carry



Great Duffle-Style Bag with Improved Durability!

Separate Compartment for your Socks and Delicates



Keeps Clothes Neat and Secure

Sewn in Hook Lets Bag Double as a Hamper



Mobile and RFID technology allow us to send text reminders to your student regarding pick up and delivery of laundry and dry cleaning.



facebook

www.Facebook.com/EandRLaundry

Home



EandRLaundry

Local Business · Manchester, New Hampshire



Share Post Photo Link Video

Write something...

Robert, Groton Student
E&R has made my life so much less stressful. I see people walking to do laundry all the time when I need to spend my time elsewhere. Thanks to E&R, I have an amazing luxury to spend my time the way I need to. All of my clothes are always in neat condition when returned which allows me to have a closet free of clutter while none of my time is wasted folding and ironing. Thank you, E&R!

Shannon, Choate and Barnard College Mom
Thanks E & R! You have been the saving grace for our family! We have one daughter at Choate and one at Barnard. Both love having your laundry service take that worry off of their minds. They say it is awesome to be able to send out a bag of dirty clothes and have clean ones "magically" reappear! We love E&R!

LA, Salisbury Mom
E&R Laundry service is by far the best service being offered to students!! Not only is it convenient but the service my son receives has been top notch. The staff have been excellent to work with and being from another country it gives me peace of mind knowing that my son never has to worry about his clothing. Thank you to everyone at E&R!

A very grateful Salisbury Mom
Like · Comment · January 12 at 4:04pm



Our Facebook page is not only a place for us to connect with parents and students, it's Contest Central where we give away Great Prizes, Free Service and Cool Swag!



Find us on Facebook



Scan to "Like" Us

WIN GREAT PRIZES

WIN FREE SERVICE

WIN COOL SWAG