



WELLESLEY COLLEGE

Clapp, Jewett Art, Jewett Music, Science Center, Special Collections, Archives

## A Glimpse into Wellesley a Century Ago

Mary Yearl, Interim Archivist

In February 2016, the Archives acquired at auction a collection of items belonging to

Hazel Paris

Cederborg, '15  
(MA '26).

Cederborg is best known as the author of the Little Red Wagon series of children's books. She graduated from Wellesley with a B.A. in 1915 and remained at the college

for the following year to study for an M.A. in Education. She put her studies on hold and completed her remaining coursework at Harvard in 1920 and 1923. Wellesley accepted those credits and awarded her an M.A. after she submitted her thesis in 1926. The collection demonstrates that Hazel Paris Cederborg distinguished herself in many

ways. From the spring of her first year on campus comes a silver trophy cup,

engraved:

"Wellesley College

Novice

Competition,

Tennis, May 1912,  
won by Hazel V.

Paris." Her

Master's thesis is

identified by a

handwritten note

as, "The longest

thesis submitted

(up to 1965)." There

are also glimpses of

the ordinary in her



*Hazel Paris in 14 Wilder Hall. 1914-1915*

collection. A recipe box contains many

entries that provide a

snapshot into a

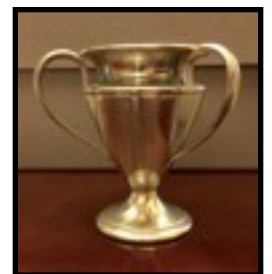
twentieth century

American home: White

Mt. Muffins, Peanut

Butter Bread, Corn

Pudding, Soft Molasses



Continued on page 4

## Friends of the Library

### Honorary Chairperson

Paula A. Johnson

### Founding Member

Mary E. Jackson '24

### Co-Chairs

Kerry Carwile Masteller '01

Ray Schmidt

### Newsletter Editors

Lynda Lency Leahy '66

Judith Black

Diane S. Triant '68

### Steering Committee

Mary Allen

Georgia Brady Barnhill '66

Judith Black

Clemency Chase Coggins '55

Elizabeth Febo

Sarah Gilman '82

Anne Yost Harper '58

Lynda Lency Leahy '66

Nancy L. Leblang '78

Kerry Carwile Masteller '01

Jacqueline Marie Musacchio '89

Ruth R. Rogers

Susan F. Saul '65

Amy Beltz Stimac '99

Diane Speare Triant '68

Sarah Wall-Randell '97

Leslie Perrin Wilson '75

### Emeritae

Janice L. Hunt '52

Lia Gelin Poorvu '56

Polly Slavet '67

June M. Stobaugh '66

Elinor Bunn Thompson '37

# New Members of the Library Staff

## WELCOME!

The library community is pleased to welcome the following new staff members:

**Karen Bohrer**, Director of Library Collections. Karen comes to Wellesley from Worcester Polytechnic Institute and the American School of Classical Studies in Athens, Greece. (Look for more about Karen in the fall newsletter.)

**Elliot Brandow**, Assistant Director, Research Services. Elliot was formerly the Senior Digital Scholarship Librarian/Bibliographer for History at Boston College.

**Sarah Barbrow**, a Research and Instructional Support Librarian, is shifting her area of support to the sciences.

In addition, searches are ongoing this summer for a new Music Librarian and a new Research and Instructional Librarian for the Social Sciences.

# A Luxury Manuscript Leaf for Special Collections

Ruth R. Rogers, Curator of Special Collections



Sometimes gifts to Special Collections seem too perfectly timed to be just random. Last November, I attended the annual Schoenberg Conference on medieval and renaissance

The story of the richly decorated Llangettock Breviary is a prime example of this practice, but happily, its history is well documented. The original manuscript of over 500 leaves was commissioned as a luxury liturgical manuscript by Leonello d'Este (1407-1450), Marchese of Ferrara during the years 1441-1448. Leonello's family wealth allowed

him to serve as patron to the most eminent writers, artists, and musicians of the day, including Leon Battista Alberti, Giovanni Bellini, Andrea Mantegna, and Guillaume Dufay. We know that the manuscript was still intact into the 19<sup>th</sup> century, though many illuminated initials had been excised. It was then acquired by the Rolls family of Monmouth, Wales—whose descendants founded the Rolls Royce company in 1906. (See the *Broken Books* website for more information. (<https://brokenbooks.omeka.net>).

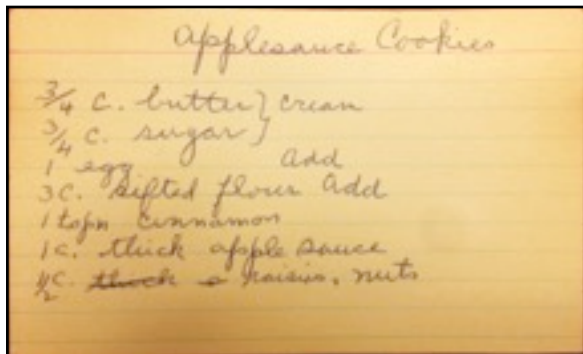
manuscripts at the University of Pennsylvania. One presentation of great importance to American academic libraries was a demonstration of a new database called *Broken Books*, the goal of which is to digitally reassemble widely dispersed manuscripts fragments in libraries and private collections throughout the world. Sadly, the practice of dis-binding illuminated manuscripts and selling individual leaves or decorated initials to collectors is not uncommon. One can find many examples in museums, library collections, and in countless private homes. Though to a bibliophile it seems ethically wrong to destroy a unique book and sell it off in pieces, the practice has been around for as long as books have been made. Once sold at auction or private sale, these beautiful fragments are essentially hidden, their provenance undocumented and buried.



After surviving in its bound state for over four centuries, the Llangettock breviary was purchased at auction in 1958 by the Boston book dealer Goodspeed's, who dis-bound it and then sold it in parts shortly thereafter. The artfully framed individual leaves were laid under gilt bordered glass and sold to collectors through a published catalog. Fast forward to the present...

Continued from page 1

Gingerbread, Ham Loaf, and Apple Sauce Cake, to name a few.



*Tree Day, Wellesley, 1919. Taken by Emil (presumably Emil Cederborg)*

Among the treasures are her class ring and photographs from her time at Wellesley. The photos show her room in Wilder Hall, which was demolished in 1930 to make room for Green Hall. She lived in Wilder every year except her first, when she roomed at 11



Abbott Street in Wellesley. Other pictures show her on Tree Day, at her graduation, and simply enjoying time with friends.

Her photo album also documents the College Hall Fire, which occurred in the spring of her junior year. Overall, the Hazel Paris collection represents a wonderful snapshot of Wellesley life during a momentous time in college history.



*Hazel Paris in 14 Wilder Hall. 1912-1913*



*The Wilder Crowd, 1914 (right to left, identified by Paris): Chi Che Wang ('14), Hazel Paris ('15); Ruth Clark ('16); Marian Lane ('16); Rachel Clark ('16); Emily Porter ('16); Margaret Claflin ('16); Helen Powell ('16)*



*Clockwise from top left: Hazel Paris, Wellesley, 1915, College Hall Fire. 06:15am. March 17, 1914, College Hall, burnt out, "The 'Hen Coop,' temporary Administration Building erected after the fire which destroyed College Hall, March 1914.", Hazel Paris, Tree Day, Wellesley, 1915*

# 2016 Student Library Research Award Winners

Laura O'Brien, Research and Instruction Librarian, hosted a reception for the recipients of the 2016 Student Library Research Awards. Thirty-seven students submitted essays with supporting letters from their professors, and the winning students were honored at a ceremony in the Library on May 3. The Student Library Research Award Evaluation Committee members C. C. Coggins, Betty Febo, and O'Brien commented that the Award recipients demonstrated a thoughtful, methodical, and scholarly approach to research and diverse use of library resources, which contributed to their ability to produce a high quality research project.

The Student Library Research Awards are sponsored by the Friends of the Wellesley College Library. For more information about the awards, <http://www.wellesley.edu/its/research/award>. The winners:

- ★ **Alice Palmer '17**, the 300-level award for her HIST 302 paper, "Dunkirk: The Defeat That Inspired a Nation." Supporting faculty: Nina Tumarkin
- ★ **Zarina Patwa '18**, the 100/200-level award for her REL 204 paper, "The Scopes and Kitzmiller Trials: Legitimacy of Religious Dialogue in Court." Supporting faculty: Ed Silver
- ★ **Sabrina Liang '19**, the First Year Award for her POL 208 paper, "The People's Liberation Army Navy: An Emerging Dragon of the Seas." Supporting faculty: William A. Joseph
- ★ **Caitlin Coyiuto '16**, the Independent Study Award for her PSYC 350 paper, "Resting EEG Asymmetries and Levels of Irritability." Supporting faculty: Christen Deveney
- ★ **Angelina Li '19**, an honorable mention for her ECON 213 paper, "The Trans Pacific Partnership in Japan, Malaysia and Vietnam: Explaining the impact of the Trans Pacific Partnership on Asia-Pacific countries with differing income levels and exchange rate systems." Supporting faculty: Akila Weerapana



The Student Library Research Awards Committee: Brooke Henderson, C. C. Coggins, Laura O'Brien, Betty Febo  
Photo by Lynda Leahy



Zarina Patwa '18, Rel204; Caitlin Coyiuto '16, Psych 350; Angelina Li '19, Econ 213; Sabrina Liang '19, Pol 208; Alice Palmer '17, Hist 302  
Photo by Lynda Leahy

Continued from page 3

When the call came from alumna Nancy Hattox Fohl, class of 1959, I was floored by the coincidence. How could she be offering a leaf from the very same 15<sup>th</sup> century luxury manuscript that I had just learned about a week earlier? Having received it as a gift from her husband Timothy more than fifty years ago, Mrs. Fohl explained that they both agreed that it should be enjoyed by a wider audience, and they would like to give it to the Wellesley College Library. I was overjoyed to think that we not only could use it in teaching, but that researchers far beyond Wellesley would

eventually be able to access it as well, through the power of digital technology. Where once it would have taken a lifetime for a researcher to track down all the extant fragments of a centuries-old manuscript, now high-resolution digital imaging and rich metadata are being used to create virtual repositories, offering opportunities for new research and teaching. Thanks to Nancy and Tim Fohl, their gift to Wellesley College is more than that—it is a gift to the world of scholars everywhere.



**A standing-room only** crowd enjoyed a presentation by Special Collections Curator Ruth R. Rogers during Reunion 2016. Her lecture, "Reading with the Senses" focused on how one reads and understands artists' books on multiple levels-- haptic, visual, and cerebral.

### **BEYOND WORDS: ILLUMINATED MANUSCRIPTS IN BOSTON COLLECTIONS**

This will be the first exhibition to showcase the extraordinary highlights of illuminated manuscripts in the Boston area. An ambitious collaborative metropolitan project, notable for the size of its curatorial team, the number of lending institutions, and a multi-venue display, the exhibition will showcase more than 260 outstanding manuscripts and printed books dating from the ninth to the seventeenth centuries and will be supplemented by an extensive catalogue, a three-day symposium, and significant public programming. Wellesley

College is among the institutions lending manuscripts from the Library's Special Collections—seven in all. They will be on display at the Isabella Stewart Gardner Museum and at Boston College's McMullen Museum of Art.

Dates: September 22, 2016–January 16, 2017

Information: <http://>

[www.themedievalacademyblog.org/beyond-words-illuminated-manuscripts-from-boston-collections/](http://www.themedievalacademyblog.org/beyond-words-illuminated-manuscripts-from-boston-collections/)

Friends of



WELLESLEY COLLEGE  
LIBRARY

FRIENDS OF WELLESLEY COLLEGE LIBRARY

Office for Resources  
Wellesley College  
106 Central Street  
Wellesley, MA 02481-8203

[www.wellesley.edu/lts/fol](http://www.wellesley.edu/lts/fol)

NON-PROFIT ORG  
US POSTAGE  
PAID  
BOSTON MA  
PERMIT No 12548

## Is it time to renew your membership?

You may use the form below and make your check payable to **Wellesley College**.

Mail to: Friends of Wellesley College Library, Wellesley College  
Office for Resources, 106 Central Street, Wellesley, MA 02481

Please choose a membership category:

- Patron \*\$2,500       Donor \$250       Endowment Fund  
 Benefactor \$1000       Sponsor \$100  
 Supporter \$500       Contributor \$50       Young Alum \$15 (graduates from past 5 years)  
 \*Entitles Durant Society Membership

Name: \_\_\_\_\_ Class, if applicable: \_\_\_\_\_

Street Address: \_\_\_\_\_

City: \_\_\_\_\_ State: \_\_\_\_\_ Zip Code: \_\_\_\_\_

Phone Number: (\_\_\_\_) \_\_\_\_\_ Email Address: \_\_\_\_\_

To make your gift online: [www.wellesley.edu/give](http://www.wellesley.edu/give) Select "give to an area of your choice." Once you have filled in the form, you will be able to choose "Friends of the Library" as your gift designation.

**Thank you for your continuing support!**

